

TopWing

ULTRA-HYGIENIC ROTARY LOBE PUMPS



02 - 10

The TopWing pump is designed for ultra-hygienic applications and is very easy to clean both by CIP and by SIP. The pump is extremely rigid built for long durable operation and easy maintenance.

The complete pump is made of stainless steel with smooth surface on all product-contact parts.

The pump range is approved for EHEDG, 3-A and a variety of other certificates or validation documents are available for the most demanding needs.

With less agitation and shear TopWing can handle delicate liquids containing both soft and hard particles without product degradation.

TopWing is the most modern and strongest rotary lobe pump in the market today without compromising hygiene.

Based in Charlotte, North Carolina, SPX Corporation (NYSE: SPW) is a global Fortune 500 multi-industry manufacturing leader. For more information, please visit www.spx.com

TopWing Ultra-Hygienic Rotary Lobe Pumps

ULTRA-HYGIENIC DESIGN

- Self-draining rotor case in vertical position
- Self-draining mechanical seals inside the rotor case
- Clean O-ring position
- 316 L stainless steel body and cover
- Smooth standard surface. Electro-polished finish as option
- Easy to clean – CIP, SIP or manually
- Withstands rapid temperature changes and accommodates harsh CIP/SIP-cycles.
- EHEDG and 3-A options

VALIDATED AND CERTIFIED

- Easy to validate for Ultra-hygienic applications
- Package of certificates available as option, as example:
 - Flow and pressure tests
 - Cleanability certificates as EHEDG and 3-A
 - Material certificates as 3.1, FDA, USP Class VI and AFO
 - Certificates of surface roughness, welding, electro- polishing
 - ATEX certificates (hazardous zone)
 - Quality (ISO 9001) and environmental (ISO 14001) certificates

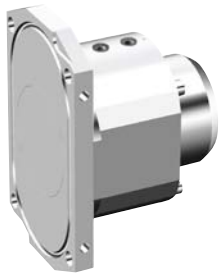
TROUBLE-FREE OPERATION

- Duplex stainless steel in rotors, shafts and retainers
 - Strong assembly
 - Low thermal expansion
 - High corrosion resistance
 - Harder material
- Complete pump in stainless steel
 - Designed for difficult external environments
 - Easy to clean externally without risk for corrosion
- Heavy-duty construction
 - Maximized duplex shaft and bearing diameter/tight bearing position
 - Increased lifetime on bearings and seals

EASY MAINTENANCE

- Change of shaft seal without disassembling the rotorcase
- Heavy duty bearing design – pre-loaded taper roller bearings without shimming





SPECIAL APPLICATION OPTIONS

- Rectangular inlet for high viscosity products and considerably improved inlet conditions
- Thermal jacket to provide a constant temperature level within the pump
- Relief valve to secure against too high pressures. Options for automated CIP cycles are available

DESIGNED FOR DIFFICULT EXTERNAL ENVIRONMENTS

- Water resistant gear case with special seals to minimize water intrusion
- Air breather of stainless steel with back valve and labyrinth
- Complete pump manufactured in stainless steel – no corrosion, no painting

ROTOR OPTIONS

- Bi-wing rotors
 - Smooth performance with minimal damage of pumped media having soft particles such as fruits
 - Low or no pulsation when pumping viscous liquids
- Multi-lobe rotors
 - Low noise level at higher speeds
 - Low pulsation when pumping low viscous liquids
 - Low NPSHr
 - Reduced friction and power losses



TECHNICAL DATA - STANDARD CLEARANCE CLASS

PUMP TYPE	DISPLACEMENT (DM ³ /REV)	MAX CAPACITY (M ³ /H)	NOM INTERNAL DIA OF CONNECTION (MM)	MAX WORKING PRESSURE (BAR)	MAX SPEED (RPM)
TW1/0041	0.041	3.4	25	15	1400
TW1/0082	0.082	6.9	25	7	1400
TW2/0171	0.171	12.3	40	15	1200
TW2/0343	0.343	24.7	50	7	1200
TW3/0537	0.537	32.2	50	15	1000
TW3/1100	1.100	66.0	80	7	1000
TW4/1629	1.629	78.2	80	15	800
TW4/3257	3.257	156.3	100	7	800

Typical product applications

DAIRY

Milk, Yogurt, Cream, Curds and whey, Skimmed milk, Butter, Cottage cheese, Melted cheese



DRINKS & BEVERAGE

Fruit juice, Yeast, Cider and wine, Liquid sugar, Glucose, Spirits, Extracts, Beer



FOOD & CONFECTIONERY

Fruit preserves, Baby food, Soups and sauces, Chocolate, Sausage meat, Vegetable oils, Batter, Dough, Jam, Egg products, Prepared food, Soups, Syrup, Liquid sugar, Fondant, Ketchup, Mustard, Candy paste



PHARMACEUTICAL, MEDICINE AND BIOPROCESSING

Ultra filtration, Blood, Plasma, Enzymes, Buffers, Coating solutions, Fermentation circulation, Alcohol, Sugar solutions, Pill paste, Dragee solutions, Nutrients



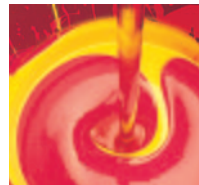
COSMETICS & PERSONAL CARE

Toothpaste, Shampoos, Gels, Creams, Soap, Lotions, Cosmetics, Hair conditioners, Extracts



CHEMICAL

Paint, Resins, Oil additives, Polymer, Glue, Ink, Gelatine



PULP & PAPER

Pine oil, Soap, Starch, Lignin, Coating, Slurry, Clay, Green liquor mud, Sludge



TopWing



Ultra-Hygienic Rotary Lobe Pumps

FOR YOUR LOCAL REPRESENTATIVE:

<http://www.spx.com/en/johnson-pump/where-to-buy/>

SPX FLOW TECHNOLOGY POLAND SP. Z O.O.

Hermana Frankego 9, PL 85-862 Bydgoszcz, Poland

P: +48 52 5259 900

F: +48 52 5259 909

E: ft.bydgoszcz.office@spx.com

SPX reserves the right to incorporate our latest design and material changes without notice or obligation.

Design features, materials of construction and dimensional data, as described in this bulletin, are provided for your information only and should not be relied upon unless confirmed in writing. Please contact your local sales representative for product availability in your region. For more information visit www.spx.com and www.johnson-pump.com.

The green ">" is a trademark of SPX Corporation, Inc..

JP_120_GB Version: 01/2013 Issued: 03/2013

COPYRIGHT © 2012, 2013 SPX Corporation