

## SPHERICAL VALVES

- eccentrically mounted rotating body
- design with a sliding revision seal
- dimensions from DN300 and above
- pressure from PN25 and above
- assembly joint is part of the closure (easier installation into the pipe, the lower price of the set)
- bypass is part of the closure



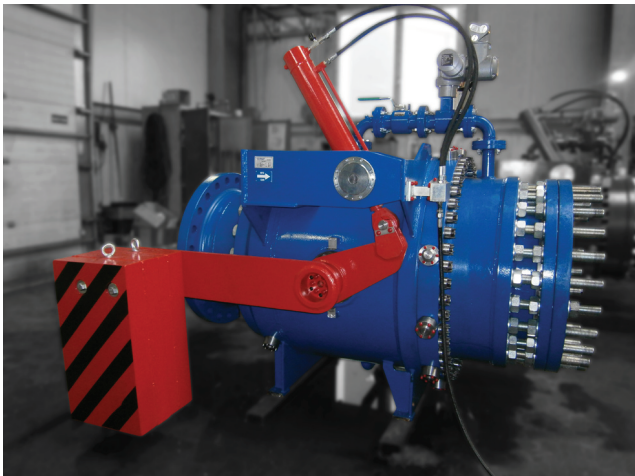
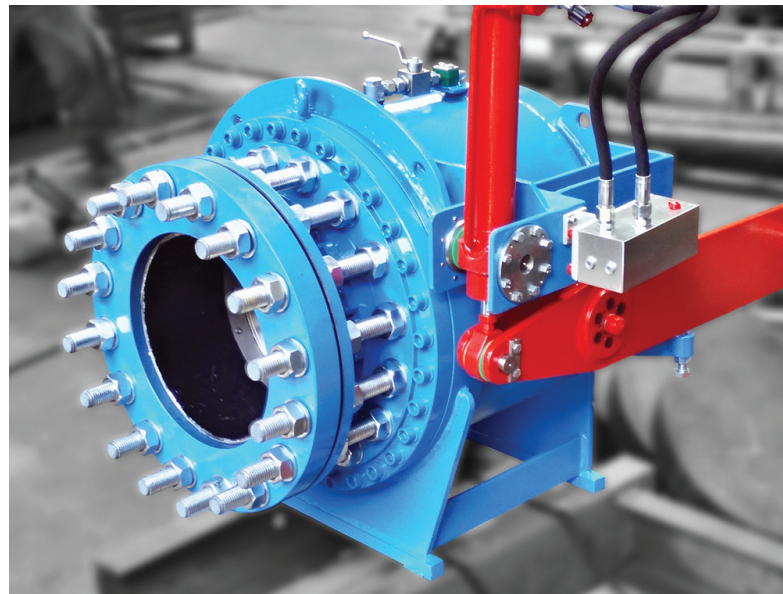
**VALVES AND TECHNOLOGY FOR WATERWORKS**  
**MANUFACTURES | ASSEMBLY | REHABILITATIONS**

 **ŠEVČÍK**  
**HYDRO**



# VALVES AND TECHNOLOGY FOR WATERWORKS

MANUFACTURES ASSEMBLY REHABILITATIONS



# Machinery equipment

The company possesses complete machinery for production.

- 4 production halls
- production area over 1500 m<sup>2</sup>
- storage space over 500 m<sup>2</sup>

Machine park is constantly being expanded and modernized.



## Certificates

Company is certified and complies with regulation requirements:

- ISO 9001 (quality)
- ISO 14001 (environment)
- Permission for welding of steel structures according to ČSN EN1090-1
- Quality requirements for welding according to ISO 3834

