



# STRAUB-PLAST-PRO Technical Manual

**straub**<sup>®</sup>   
  
**the right connection**  
an OAliaxis company

# Contents

■ <b>STRAUB-PLAST-PRO</b>	<b>3</b>
Properties	3
Example	3
The full set	4
■ <b>COMPONENTS</b>	<b>5</b>
Connectors	5
Pipe dimensions and tolerances	5
STRAUB-PLAST-PRO L   Coupler	6
STRAUB-PLAST-PRO LR   Repair-Coupler	7
STRAUB-PLAST-PRO R   Reducer	8
STRAUB-PLAST-PRO B90   Elbow 90°	9
STRAUB-PLAST-PRO B45   Elbow 45°	10
STRAUB-PLAST-PRO T   Equal Tee	11
STRAUB-PLAST-PRO TFA   Flanged Branch Tee	12
STRAUB-PLAST-PRO FB90   Duck Foot Bend 90°	13
STRAUB-PLAST-PRO FA   Flange Adapter	14
■ <b>NOTES</b>	<b>15</b>
■ <b>10 GOOD REASONS TO USE STRAUB-PLAST-PRO</b>	<b>16</b>

# STRAUB-PLAST-PRO

## Axial restraint connection of PE80 and PE100 pipes

Axially restrained **full set** allowing a quick and simple installation of pressure pipes made of polyethylene (PE). The full sets are available for pipes in dimension SDR 11 (63.0 - 110.0 mm, PN16) and SDR 17 (>110.0 - 355.0 mm, PN10). STRAUB-PLAST-PRO is particularly suitable for water, waste water, industrial plants and maintenance applications.



STRAUB-PLAST-PRO is applicable, whenever pipes cannot be connected by conventional technologies, like electro fusion. The unique full set offers the great advantage that pipes can easily be connected **without the need of external power supply** and pipe end preparations, even under demanding external circumstances. Thanks to the **simple installation** concept, also people with less technical knowledge are able to install STRAUB-PLAST-PRO.



The pipes made of PE 80 or PE 100 are being connected with a combination of liner (e.g. Coupler, Reducer, Elbow 90°, Elbow 45°, Equal Tee, Flanged Branch Tee, etc.) and two connectors. STRAUB-PLAST-PRO is highly resistant against corrosion, thanks to the usage of first class materials.



PE pipes with additive protective layer and diffusion barrier layer are normally used, when drinking water lines have to be installed in contaminated soils. If the pipes are connected in a conventional manner, the aluminium layer has to be removed imperatively. This operation is not necessary if STRAUB-PLAST-PRO is used. STRAUB-PLAST-PRO connects such barrier layer pipes easily and safely without any pipe end preparation.

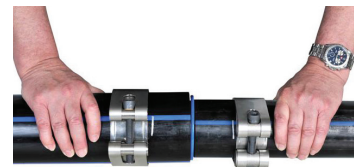
## Example STRAUB-PLAST-PRO R Reducer



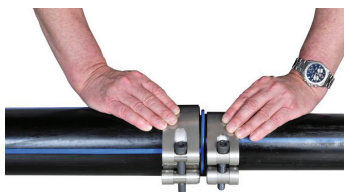
Slide the connectors over both pipes.



Push the reducer into the first tube until it stops



Push the tubes together as far as they will go.



Align the connectors to the pipe ends.



Tighten the locking bolts alternately with a torque wrench to the final torque rate indicated on the label of the connector.

# The full set STRAUB-PLAST-PRO

## Description

## Scope of delivery

consisting of:

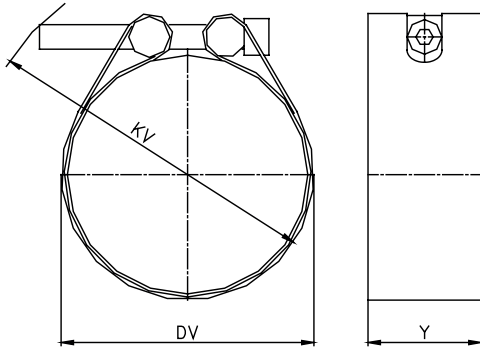
		Liner		Connector
<b>STRAUB-PLAST-PRO L</b> Coupler	▶		+ 2x	
<b>STRAUB-PLAST-PRO LR</b> Repair-Coupler (Repairs up to 100 mm, other lengths on request)	▶		+ 2x	
<b>STRAUB-PLAST-PRO R</b> Reducer	▶		+ 2x	
<b>STRAUB-PLAST-PRO B90</b> Elbow 90°	▶		+ 2x	
<b>STRAUB-PLAST-PRO B45</b> Elbow 45°	▶		+ 2x	
<b>STRAUB-PLAST-PRO T</b> Equal Tee	▶		+ 3x	
<b>STRAUB-PLAST-PRO TFA</b> Flanged Branch Tee *	▶		+ 2x	
<b>STRAUB-PLAST-PRO FB90</b> Duck Foot Bend 90° *	▶		+ 1x	
<b>STRAUB-PLAST-PRO FA</b> Flange Adapter * (loose flange is included)	▶		+ 1x	

\*Flange bolt set is not supplied (DIN EN 1092-1)

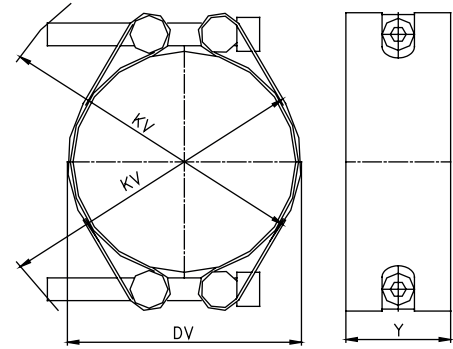
Example for your order: STRAUB-PLAST-PRO L 90.0, SDR 11

## STRAUB-PLAST-PRO Connectors

Components / Materials	up to 160 mm	from 180 mm
Connectors	AISI 316 L	1.4462
Bolts	A4 - 80	A4 - 80
Bars	AISI 316 L / 316 TI	AISI 316 L / 316 TI



63 mm up to 180 mm



225 mm up to 355 mm

OD [mm]	DV braced [mm]	KV braced [mm]	Y [mm]	Allen head [mm]	Thread [M..]	Torque Rate [Nm]
63	65	95	47.5	10	12	50
75	79	79	47.5	10	12	55
90	94	120	47.5	10	12	60
110	113	139	55	10	12	60
125	129	155	55	10	12	60
140	144	170	55	10	12	65
160	165	188	55	10	12	65
180	184	216	55	14	16	160
225	227	258	55	14	16	160
250	251	282	55	14	16	160
280	282	311	55	14	16	160
315	318	355	60 / 70	17	20	280
355	359	394	60 / 70	17	20	300

## Pipe dimensions and tolerances

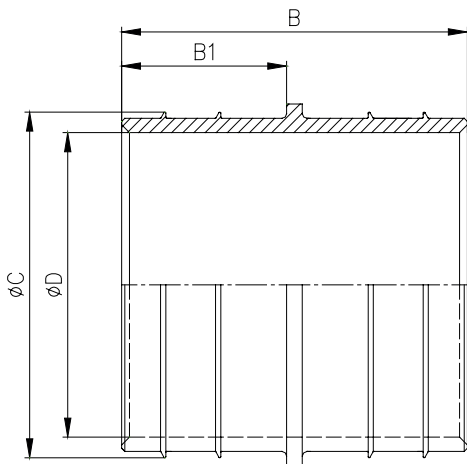
Our full sets are defined for the following pipe dimensions according to EN 19201-2:2003.

Size [mm]	SDR	OD min [mm]	OD max [mm]	Wall thickness min [mm]	Wall thickness max [mm]	ID [mm]
63	11	63.0	63.4	5.8	6.5	51
75	11	75.0	75.5	6.8	7.6	61
90	11	90.0	90.6	8.2	9.2	73
110	11	110.0	110.7	10	11.1	89
125	17	125.0	125.8	7.4	8.3	110
140	17	140.0	140.9	8.3	9.3	123
160	17	160.0	161.0	9.5	10.6	140
180	17	180.0	181.1	10.7	11.9	158
225	17	225.0	226.4	13.4	14.9	197
250	17	250.0	251.5	14.8	16.4	220
280	17	280.0	281.7	16.6	18.4	246
315	17	315.0	316.9	18.7	20.7	277
355	17	355.0	357.2	21.1	23.4	312

# STRAUB-PLAST-PRO L

## Coupler

Components / Materials	up to 160 mm	from 180 mm
Connectors	AISI 316 L	1.4462
Bolts	A4 - 80	A4 - 80
Bars	AISI 316 L / 316 TI	AISI 316 L / 316 TI
Liner	Carbon steel, Rilsan coated (W270, NSF61, WRAS...)	Carbon steel, Rilsan coated (W270, NSF61, WRAS...)
Medium	all qualities of water	all qualities of water
Temperature	-5°C up to 40°C <sup>1</sup>	-5°C up to 40°C <sup>1</sup>



up to 110 mm: PN 16<sup>1</sup>  
 from 125 mm: PN 10<sup>1</sup>

Product is consisting of 1 x Coupler and 2 x Connector.  
 The listed weight corresponds to the total product weight.

OD SDR 11 [mm]	OD SDR 17 [mm]	Article	Weight [kg]	B [mm]	B1 [mm]	Ø C [mm]	Ø D [mm]
63		870070	1.5	95	45	49.5	41
75		870075	1.8	95	45	59.5	50.5
90		870080	2.0	95	45	71	62
110		870085	2.6	110	52.5	87.5	76
	125	870090	3.0	110	52.5	108	95
	140	870095	3.8	110	52.5	121	107
	160	870100	4.3	110	52.5	138.5	124.5
	180	870105	4.8	110	52.5	156	140
	225	870045	9.1	110	52.5	195	174
	250	870050	10.2	110	52.5	217	194
	280	870055	11.9	110	52.5	243	218
	315	870060	19.6	130	62.5	273	244
	355	870065	23.2	130	62.5	308	275

### Remarks

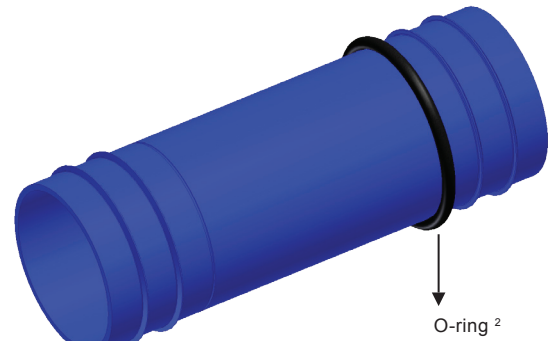
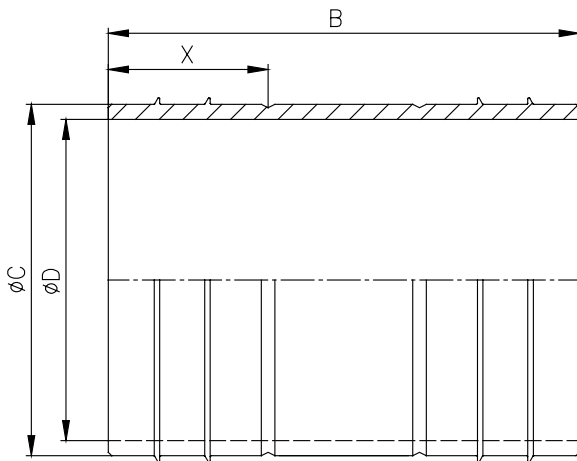
- Pipe tolerances according to EN 12201-2 / DIN 8074
- Test pressure at 20°C = 1.5 x PN

<sup>1</sup> For constant temperatures higher than 20°C, please refer to the maximum pressure data according to DIN 8074

# STRAUB-PLAST-PRO LR

## Repair-Coupler

Components / Materials	up to 160 mm	from 180 mm
Connectors	AISI 316 L	1.4462
Bolts	A4 - 80	A4 - 80
Bars	AISI 316 L / 316 TI	AISI 316 L / 316 TI
Liner	Carbon steel, Rilsan coated (W270, NSF61, WRAS...)	Carbon steel, Rilsan coated (W270, NSF61, WRAS...)
Medium	all qualities of water	all qualities of water
Temperature	-5°C up to 40°C <sup>1</sup>	-5°C up to 40°C <sup>1</sup>



up to 110 mm: PN 16<sup>1</sup>  
 from 125 mm: PN 10<sup>1</sup>

Product is consisting of 1 x Repair-Coupler and 2 x Connector.  
 The listed weight corresponds to the total product weight.

OD SDR 11 [mm]	OD SDR 17 [mm]	Article	Weight [kg]	B [mm]	X [mm]	Ø C [mm]	Ø D [mm]
63		871114	1.8	195	47.5	49.5	40
75		871115	2.2	195	47.5	59.5	49.5
90		871116	2.4	195	47.5	71	61
110		871117	3.0	210	55	87.5	75
	125	871118	4.3	210	55	108	94
	140	871119	5.4	210	55	121	106
	160	871120	6.0	210	55	138.5	123.5
	180	871121	7.0	210	55	156	140

### Remarks

- Pipe tolerances according to EN 12201-2 / DIN 8074
- Test pressure at 20°C = 1.5 x PN
- Other repair-lengths on request

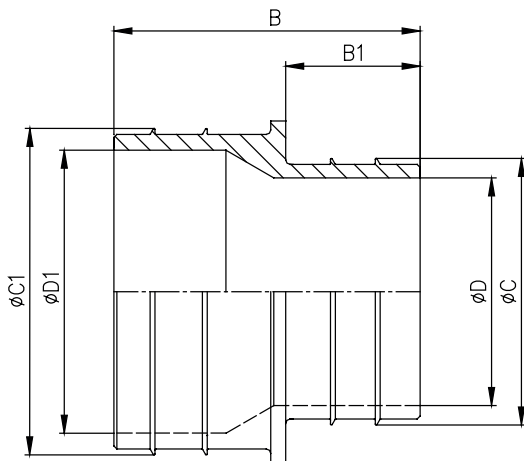
<sup>1</sup> For constant temperatures higher than 20°C, please refer to the maximum pressure data according to DIN 8074

<sup>2</sup> The O-ring prevents the connector from falling into the plastic pipe

# STRAUB-PLAST-PRO R

## Reducer

Components / Materials	up to 160 mm	from 180 mm
Connectors	AISI 316 L	1.4462
Bolts	A4 - 80	A4 - 80
Bars	AISI 316 L / 316 TI	AISI 316 L / 316 TI
Liner	Carbon steel, Rilsan coated (W270, NSF61, WRAS...)	Carbon steel, Rilsan coated (W270, NSF61, WRAS...)
Medium	all qualities of water	all qualities of water
Temperature	-5°C up to 40°C <sup>1</sup>	-5°C up to 40°C <sup>1</sup>



up to 110 mm: PN 16<sup>1</sup>  
 from 125 mm: PN 10<sup>1</sup>

Product is consisting of 1 x Reducer and 2 x Connector.  
 The listed weight corresponds to the total product weight.

OD SDR 11 [mm]	OD SDR 17 [mm]	Article	Weight [kg]	B [mm]	B1 [mm]	Ø C [mm]	Ø C1 [mm]	Ø D [mm]	Ø D1 [mm]
90 x 63		870235	2.0	95	45	49.5	71	41	62
110 x 90		870240	2.5	102.5	45	71	87.5	62	76
	125 x 110 <sup>3</sup>	870250	3.2	110	52.5	87.5	108	76	95
	160 x 110 <sup>3</sup>	870185	5.4	110	52.5	87.5	138.5	76	124.5
	160 x 125	870195	4.8	110	52.5	108	138.5	95	124.5
	180 x 125	870205	6.0	110	52.5	108	156	95	140

### Remarks

- Pipe tolerances according to EN 12201-2 / DIN 8074
- Test pressure at 20°C = 1.5 x PN

<sup>1</sup> For constant temperatures higher than 20°C, please refer to the maximum pressure data according to DIN 8074

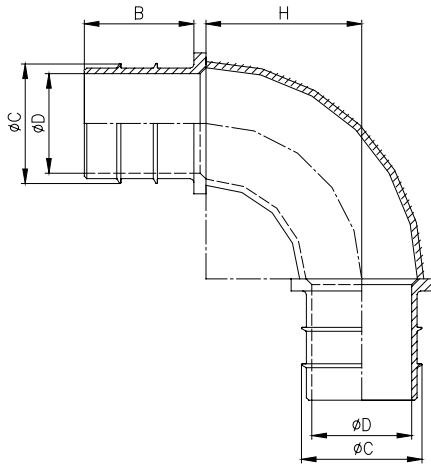
<sup>3</sup> AD 125.0 mm and AD 160.0 mm SDR 17



# STRAUB-PLAST-PRO B90

Elbow 90°

Components / Materials	up to 160 mm	from 180 mm
Connectors	AISI 316 L	1.4462
Bolts	A4 - 80	A4 - 80
Bars	AISI 316 L / 316 TI	AISI 316 L / 316 TI
Liner	Carbon steel, Rilsan coated (W270, NSF61, WRAS...)	Carbon steel, Rilsan coated (W270, NSF61, WRAS...)
Medium	all qualities of water	all qualities of water
Temperature	-5°C up to 40°C <sup>1</sup>	-5°C up to 40°C <sup>1</sup>



up to 110 mm: PN 16<sup>1</sup>  
 from 125 mm: PN 10<sup>1</sup>

Product is consisting of 1 x Elbow 90° and 2 x Connector.  
 The listed weight corresponds to the total product weight.

OD SDR 11 [mm]	OD SDR 17 [mm]	Article	Weight [kg]	B [mm]	Ø C [mm]	Ø D [mm]	H [mm]
63		870520	1.9	45	49.5	41	64
75		870525	2.3	45	59.5	50.5	72
90		870530	2.7	45	71	62	92
110		870535	3.7	52.5	87.5	76	117
	125	870540	5.1	52.5	108	95	142
	140	870545	6.2	52.5	121	107	152
	160	870550	8.3	52.5	138.5	124.5	190
	180	870555	10.8	52.5	156	140	216
	225	870495	19.6	52.5	195	174	270
	250	870500	26.0	52.5	217	194	305
	280	870505	37.0	52.5	243	218	378
	315	870510	44.5	52.5	273	244	381
	355	870515	63.2	52.5	308	275	457

## Remarks

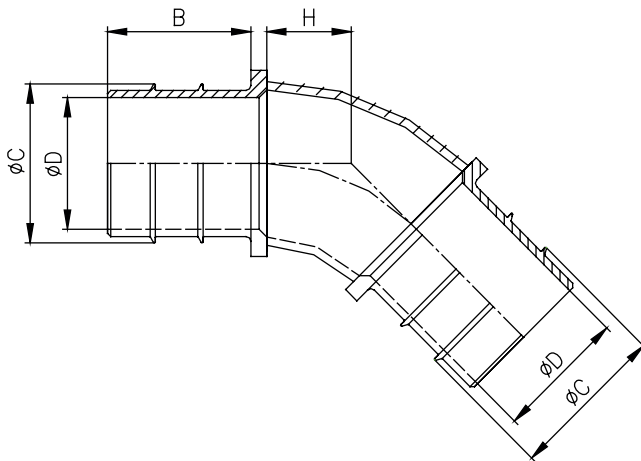
- Pipe tolerances according to EN 12201-2 / DIN 8074
- Test pressure at 20°C = 1.5 x PN

<sup>1</sup> For constant temperatures higher than 20°C, please refer to the maximum pressure data according to DIN 8074

# STRAUB-PLAST-PRO B45

Elbow 45°

Components / Materials	up to 160 mm	from 180 mm
Connectors	AISI 316 L	1.4462
Bolts	A4 - 80	A4 - 80
Bars	AISI 316 L / 316 TI	AISI 316 L / 316 TI
Liner	Carbon steel, Rilsan coated (W270, NSF61, WRAS...)	Carbon steel, Rilsan coated (W270, NSF61, WRAS...)
Medium	all qualities of water	all qualities of water
Temperature	-5°C up to 40°C <sup>1</sup>	-5°C up to 40°C <sup>1</sup>



up to 110 mm: PN 16<sup>1</sup>  
 from 125 mm: PN 10<sup>1</sup>

Product is consisting of 1 x Elbow 45° and 2 x Connector.  
 The listed weight corresponds to the total product weight.

OD SDR 11 [mm]	OD SDR 17 [mm]	Article	Weight [kg]	B [mm]	Ø C [mm]	Ø D [mm]	H [mm]
63		870642	1.7	45	49.5	41	27
75		870645	2.0	45	59.5	50.5	30
90		870648	2.3	45	71	62	38
110		870651	3.1	52.5	87.5	76	48
	125	870654	4.1	52.5	108	95	59
	140	870657	5.0	52.5	121	107	63
	160	870660	6.3	52.5	138.5	124.5	79
	180	870663	7.9	52.5	156	140	89
	225	870627	14.3	52.5	195	174	112
	250	870630	18.1	52.5	217	194	126
	280	870633	25.0	52.5	243	218	157
	315	870636	32.0	52.5	273	244	158
	355	870639	43.2	52.5	308	275	189

### Remarks

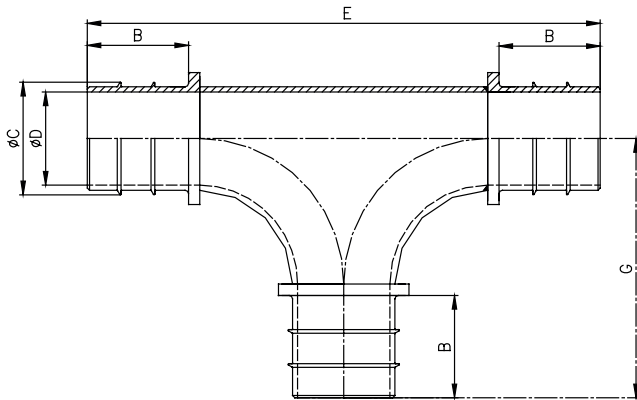
- Pipe tolerances according to EN 12201-2 / DIN 8074
- Test pressure at 20°C = 1.5 x PN

<sup>1</sup> For constant temperatures higher than 20°C, please refer to the maximum pressure data according to DIN 8074

# STRAUB-PLAST-PRO T

## Equal Tee

Components / Materials	up to 160 mm	from 180 mm
Connectors	AISI 316 L	1.4462
Bolts	A4 - 80	A4 - 80
Bars	AISI 316 L / 316 TI	AISI 316 L / 316 TI
Liner	Carbon steel, Rilsan coated (W270, NSF61, WRAS...)	Carbon steel, Rilsan coated (W270, NSF61, WRAS...)
Medium	all qualities of water	all qualities of water
Temperature	-5°C up to 40°C <sup>1</sup>	-5°C up to 40°C <sup>1</sup>



up to 110 mm: PN 16<sup>1</sup>  
 from 125 mm: PN 10<sup>1</sup>

Product is consisting of 1 x Equal Tee and 3 x Connector.  
 The listed weight corresponds to the total product weight.

OD SDR 11 [mm]	OD SDR 17 [mm]	Article	Weight [kg]	B [mm]	Ø C [mm]	Ø D [mm]	E [mm]	G [mm]
63		870370	2.9	45	49.5	41	214	107
75		870375	3.4	45	59.5	50.5	228	114
90		870380	4.2	45	71	62	252	126
110		870385	5.7	52.5	87.5	76	287	143.5
	125	870390	7.3	52.5	108	95	325	162.5
	140	870395	8.4	52.5	121	107	325	162.5
	160	870400	10.8	52.5	138.5	124.5	363	181.5
	180	870405	12.6	52.5	156	140	401	200.5
	225	870345	20.1	52.5	195	174	401	200.5
	250	870350	24.5	52.5	217	194	471	235.5
	280	870355	28.6	52.5	243	218	471	235.5
	315	870360	44.4	52.5	273	244	547	273.5
	355	870365	53.8	52.5	308	275	623	311.5

### Remarks

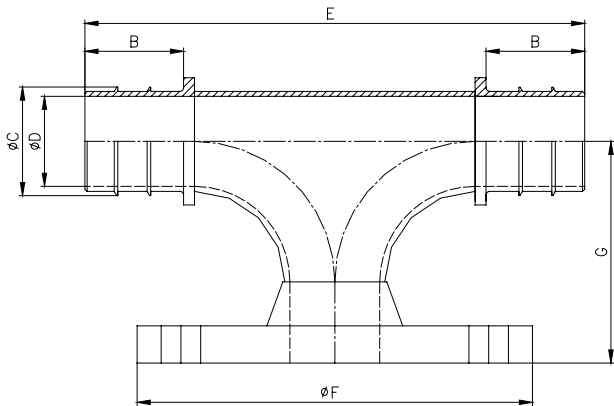
- Pipe tolerances according to EN 12201-2 / DIN 8074
- Test pressure at 20°C = 1.5 x PN

<sup>1</sup> For constant temperatures higher than 20°C, please refer to the maximum pressure data according to DIN 8074

# STRAUB-PLAST-PRO TFA

## Flanged Branch Tee

Components / Materials	up to 160 mm	from 180 mm
Connectors	AISI 316 L	1.4462
Bolts	A4 - 80	A4 - 80
Bars	AISI 316 L / 316 TI	AISI 316 L / 316 TI
Liner	Carbon steel, Rilsan coated (W270, NSF61, WRAS...)	Carbon steel, Rilsan coated (W270, NSF61, WRAS...)
Medium	all qualities of water	all qualities of water
Temperature	-5°C up to 40°C <sup>1</sup>	-5°C up to 40°C <sup>1</sup>



up to 110 mm: PN 16<sup>1</sup>  
 from 125 mm: PN 10<sup>1</sup>

Product is consisting of 1 x Flanged Branch Tee and 2 x Connector (flange bolt set is not supplied).  
 The listed weight corresponds to the total product weight.

OD SDR 11 [mm]	OD SDR 17 [mm]	Flange PN 16	Bolts	Article	Weight [kg]	B [mm]	Ø C [mm]	Ø D [mm]	E [mm]	Ø F [mm]	G [mm]
90		DN 80	M16, 8x	870757	7.0	45	71	62	272	200	136
90		DN 100	M16, 8x	870760	8.9	45	71	62	310	220	157
110		DN 80	M16, 8x	870763	7.6	52.5	87.5	76	287	200	136
110		DN 100	M16, 8x	870766	9.5	52.5	87.5	76	325	220	157
	125	DN 80	M16, 8x	870769	9.0	52.5	108	95	287	200	136
	125	DN 100	M16, 8x	870772	10.2	52.5	108	95	325	220	157
	160	DN 80	M16, 8x	870775	11.1	52.5	138.5	124.5	287	200	136
	160	DN 100	M16, 8x	870778	12.3	52.5	138.5	124.5	325	220	157
	160	DN 150	M20, 8x	870781	16.5	52.5	138.5	124.5	401	285	198
	180	DN 80	M16, 8x	870784	13.7	52.5	156	140	287	200	136
	180	DN 100	M16, 8x	870787	14.7	52.5	156	140	325	220	157
	180	DN 150	M20, 8x	870790	18.7	52.5	156	140	401	285	198

### Remarks

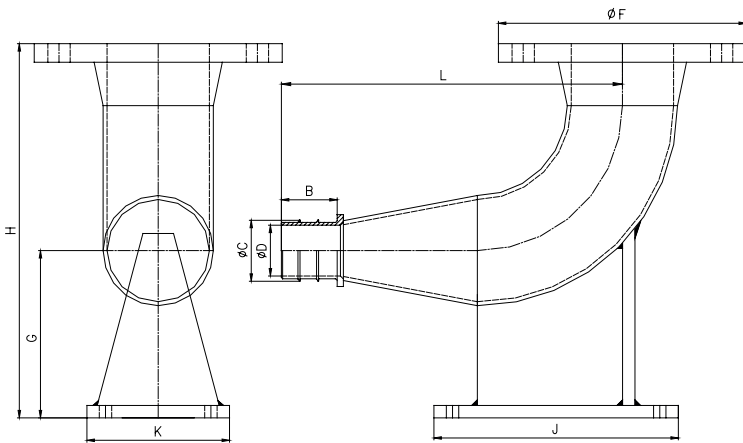
- Pipe tolerances according to EN 12201-2 / DIN 8074
- Flange according to DIN 2633 / EN 1092-1
- Test pressure at 20°C = 1.5 x PN

<sup>1</sup> For constant temperatures higher than 20°C, please refer to the maximum pressure data according to DIN 8074

# STRAUB-PLAST-PRO FB90

Duck Foot Bend 90°

Components / Materials	up to 160 mm	from 180 mm
Connectors	AISI 316 L	1.4462
Bolts	A4 - 80	A4 - 80
Bars	AISI 316 L / 316 TI	AISI 316 L / 316 TI
Liner	Carbon steel, Rilsan coated (W270, NSF61, WRAS...)	Carbon steel, Rilsan coated (W270, NSF61, WRAS...)
Medium	all qualities of water	all qualities of water
Temperature	-5°C up to 40°C <sup>1</sup>	-5°C up to 40°C <sup>1</sup>



up to 110 mm: PN 16<sup>1</sup>  
 from 125 mm: PN 10<sup>1</sup>

Product is consisting of 1 x Duck Foot Bend 90° and 1 x Connector (flange bolt set is not supplied).  
 The listed weight corresponds to the total product weight.

OD SDR 11 [mm]	OD SDR 17 [mm]	Flange PN 16	Bolts	Article	Weight [kg]	B [mm]	Ø C [mm]	Ø D [mm]	Ø F [mm]	G [mm]	H [mm]	J [mm]	K [mm]	L [mm]
63		DN 80	M16, 8x	870850	6.8	45	49.5	41	200	135	302	152	90	275
90		DN 80	M16, 8x	870855	7.3	45	71	62	200	135	302	152	115	235
110		DN 80	M16, 8x	870860	8.0	52.5	87.5	76	200	135	302	152	130	230.5
	125	DN 80	M16, 8x	870865	8.7	52.5	108	95	200	135	302	152	150	242.5
	160	DN 80	M16, 8x	870870	10.0	52.5	138.5	124.5	200	135	302	152	180	309.5
	180	DN 80	M16, 8x	870875	10.9	52.5	156	140	200	135	302	152	200	346.5

### Remarks

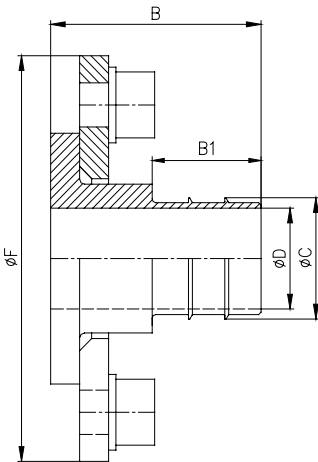
- Pipe tolerances according to EN 12201-2 / DIN 8074
- Flange according to DIN 2633 / EN 1092-1
- Test pressure at 20°C = 1.5 x PN

<sup>1</sup> For constant temperatures higher than 20°C, please refer to the maximum pressure data according to DIN 8074

# STRAUB-PLAST-PRO FA

## Flange Adapter

Components / Materials	up to 160 mm	from 180 mm
Connectors	AISI 316 L	1.4462
Bolts	A4 - 80	A4 - 80
Bars	AISI 316 L / 316 TI	AISI 316 L / 316 TI
Liner	Carbon steel, Rilsan coated (W270, NSF61, WRAS...)	Carbon steel, Rilsan coated (W270, NSF61, WRAS...)
Medium	all qualities of water	all qualities of water
Temperature	-5°C up to 40°C <sup>1</sup>	-5°C up to 40°C <sup>1</sup>



up to 110 mm: PN 16<sup>1</sup>  
 from 125 mm: PN 10<sup>1</sup>

Product is consisting of 1 x Flange Adapter, 1 x Connector and 1 x loose flange (flange bolt set is not supplied).  
 The listed weight corresponds to the total product weight.

OD SDR 11 [mm]	OD SDR 17 [mm]	Flange PN 16	Bolts	Article	Weight [kg]	B [mm]	Ø C [mm]	Ø D [mm]	B1 [mm]	Ø F [mm]
63		DN 50	M16, 4x	870936	2.4	83	49.5	41	45	165
63		DN 80	M16, 8x	870939	3.6	85	49.5	41	45	200
75		DN 65	M16, 8x	870942	3.3	85	59.5	50.5	45	185
90		DN 80	M16, 8x	870945	3.8	85	71	62	45	200
110		DN 100	M16, 8x	870948	5.2	92.5	87.5	76	52.5	220
	125	DN 100	M16, 8x	870951	4.1	92.5	108	95	52.5	220
	160	DN 150	M20, 8x	870957	9.1	104.5	138.5	124.5	52.5	285
	180	DN 150	M20, 8x	870960	7.7	104.5	156	140	52.5	285

### Remarks

- Pipe tolerances according to EN 12201-2 / DIN 8074
- Flansch gemäss DIN 2633 / EN 1092-1
- Test pressure at 20°C = 1.5 x PN

<sup>1</sup> For constant temperatures higher than 20°C, please refer to the maximum pressure data according to DIN 8074



## 10 good reasons to use STRAUB-PLAST-PRO

1. Full set
2. Different liners are available
3. Suitable for the connection of standard PE pipes and PE multi-layer pipes
4. Installation without the need of external power supply
5. Suitable for pipe connections used in contaminated soils
6. Highly resistant against corrosion and oxidation
7. No pipe end preparation is necessary
8. Quick and simple installation
9. Stiffening ring is integrated in the full set
10. Easy to store due to long service life of components

Due to the wide variety of applications, STRAUB-PLAST-PRO is a great alternative compared to the fusion of PE pipes. The full set allows clean, cost-saving and primarily safe connections within a short period of time and without time-consuming preparations.

### The repair concept

Damaged PE pipes can easily be repaired with the STRAUB-PLAST-PRO repair liner. Repairs up to a length of 100 mm are possible, thanks to the unique technical characteristics. Other repair lengths are available on request.



**STRAUB Werke AG** • Straubstrasse 13 • 7323 Wangs • Switzerland  
Phone +41 81 725 41 00 • Fax +41 81 725 41 01 • [www.straub.ch](http://www.straub.ch) • [straub@straub.ch](mailto:straub@straub.ch)

**straub**®   
**the right connection**

an *OAliaxis* company

570280\_0112