

Pressure Gauge

Class 2,5

AT 4253

Dimension	PN	Temperature range	Material
G 3/8	Full scale value for temporary load	-20 °C to +60 °C	Plastic

Range of Application

For measuring the pressure of liquefied or gaseous non-aggressive media, primarily water, air and steam.

UGC.31 Pressure gauge

Pipe-mounted, with analogue display of instantaneous value. Pressure gauges AT 4253 of Bourdon tube type. Class 2.5, husdiameter 100 mm, graded 0 -.... bar / Pascal.



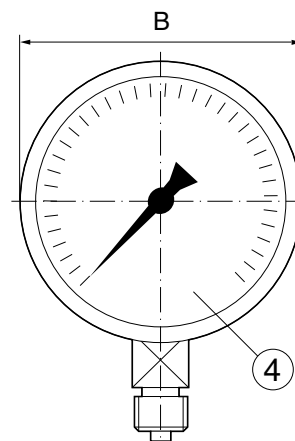
Quality Assurance

PED, AFS 1994:4

Material Specification

	AT 4253	AT 4257	AT 4258
1	Bourdon tube	copper alloy	copper alloy
2	Body	black plastic ABS	black plastic ABS
3	Measuring body	copper alloy	platinum brass
4	Glass	acrylic glass	acrylic glass

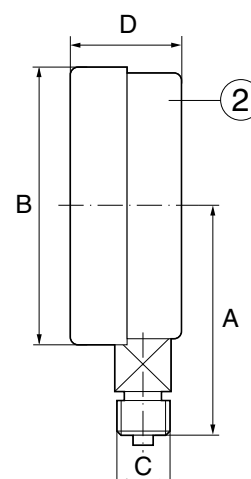
Parts in contact with media is made of copper alloy



Dimensions

	AT 4253
A	85,5
B	100
C	G 3/8
D	30

Measurment in mm.



Function and Design

The pressure gauge is a bourdon tube type, which involves a circle-formed tube spring with an oval cross-section. The system pressure internally affects the bourdon tube so that it, at a certain pressure tends to straighten out. The free end of the bourdon tube moves proportionally with the internal pressure. This movement is then converted by the measuring element into a movement/indication value on the dial.

Pressure Gauge

Class 2,5

AT 4253

Technical Information

	AT 4253
Media temperature	-20°C to +60°C
Ambient temperature	-20°C to +60°C
Accuracy class	2,5%
Effect of temperature	0,4%/10°C (over and under 20°C)
IP class	54
Max. working pressure	75% of the scale value at resting load. 66% of the scale value at fluctuating loads.

Dimensioning

The scale range should be selected in accordance to the constant pressure that not should exceed 2/3 of the scale range.

Accessories and Options

For complete pressure gauge sets including control pressure gauge valve, water trap pipe and and pressure gauge valve, please see our AT 1800-1806 product sheet.

The pressure gauges are also available in damping fluid-filled, in stainless steel and with non-standard gradings upon request.

Installation

The pressure gauges are to be mounted so that they are both easy to read and protected against vibrations, heat, cold and high air humidity. For high fluid temperatures, a water trap pipe should be used. For pressure variations and vibrations, a damping fluid-filled pressure gauge should be used.

Marking

The products are marked with Armatec, class and grading.

How to order

Example: AT 4253-10-2,5			
AT 4253	-	10	2,5
Article no. AT 4253=bodydiam. 100 mm	Execution - = standard D = damping fluid-filled U = decompression	Connection -8	Grading

Rätten till ändringar utan föregående meddelande förbehålls.
Armatec ansvarar inte för eventuella tryckfel eller misstänksänd.
Dokumentet får kopieras endast i sin helhet.