

# Couplings, fittings, check valve

For water gauge

AT 7055-7059, 7076-7079,  
7590

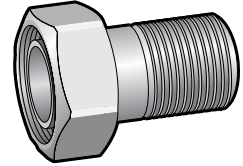
## Internet\_Variants

### Range of application

#### Gauge accessories

For installation of water meter.

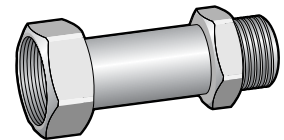
Loose water gauge couplings should only be used in the case where mounting the water meter console isn't possible.



AT 7056

## Couplings AT 7056/7076/7077

Designation	For meter		Connection	Build length in mm	Approved for		AT no	RSK-no
	size Q <sub>3</sub> /Q <sub>p</sub>	DN			kvm	vvm		
Short water meter including fiber packing	2,5/1,5	15	G15*G20	40	x	x	7056A15	198 12 32
Ditto	4/2,5	20	G20*G25	50	x	x	7056-20	198 12 65
Ditto	10/6	25	G25*G32	60	x	x	7056-25	198 12 73
Ditto	16/10	40	G40*G50	70	x	x	7056-40	198 13 07
Press couplings	1,5/0,6	15	15xG20		x	x	7056PR15-15	
Ditto	2,5/1,5	15	18xG20		x	x	7056PR15-18	
Ditto	4/2,5	20	22xG25		x	x	7056PR20-22	
Complete inlet coupling for VM-Console AT 7358	4/2,5	20	G20xG25	60	x	x	7076-20A	
Ditto	10/6	25	G25xG32	65	x	x	7076-25A	
Ditto	16/10	40	G40xG50	85	x	x	7076-40A	
Complete adjustable outlet coupling for AT 7358-190	4/2,5	20	G20xG254	80-105	x	x	7077-20A	
Ditto for AT 7358-220	4/2,5	20	G20xG25	95-130	x	x	7077-20A-1	
Ditto for AT 7358-260	10/6	25	G25xG32	110-130	x	x	7077-25A	
Ditto for AT 7358-300	16/10	40	G40xG50	130-155	x	x	7077-40A	



AT 7057

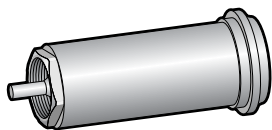
## Low water meter coupling AT 7057

Designation	For gauge		Thread externally*Internally	Total length in mm	Approved for		AT no	RSK-no
	size q <sub>3</sub>	DN			kvm	vvm		
Low water meter coupling incl. fiber packing AT 7068	4	20	G20*G25	80	x	x	7057-20	198 14 20
	10	25	G25*G32	85	x	x	7057-25	198 14 30
	16	40	G40*G50	90	x	x	7057-40	198 14 63

# Couplings, fittings, check valve

For water gauge

AT 7055-7059, 7076-7079,  
7590



AT 7079

## Adjustable check valve AT 7079

Designation	For gauge	Approved for				
	size q <sub>3</sub>	D N	kvm	vvm	AT no	RSK-no
Adjustable check valve for AT 7058-190BV.						
The sleeve can be replaced afterwards for all standard models of consoles Ditto, for AT 7358-220BV (Check valve sleeve with	4	2 0	x	x	7079-20BV	518 35 40
long stroke length for combined meter build length 190-220 mm.)	4	2 0	x	x	7079-20BV-1	518 35 41
Ditto, for AT 7358-260BV	10	2 5	x	x	7079-25BV	518 35 42
Ditto, for AT 7358-300BV	16	4 0	x	x	7079-40BV	518 35 43

## Extension piece AT 7055

Designation	For meter	Thread		Total length in mm	Approved for			
	size q <sub>3</sub>	DN	externally*internally		kvm	vvm	AT no	RSK-no
30 mm extension piece with O-ring sealing in EPDM.	4	20	G25*G25	30	x	x	7055-20	520 80 87

## Installation box for WS/WP cold water gauge

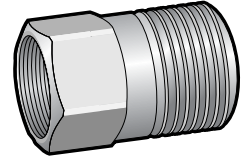
Designation	Build length	Connection dimension	Connection type	AT no
Installation box for WS/WP	330 ±40 mm	DN 50	Flanged	7055-50- 330
	400 ±60 mm	DN 80	Flanged	7055-80- 400
Cold water meter	440 ±60 mm	DN 100	Flanged	7055-100- 440
	500 ±60 mm	DN 150	Flanged	7055-150- 500

Rätten till ändringar utan föregående meddelande förbehålls.  
Armatec ansvarar inte för eventuella tryckfel eller missförstånd.  
Dokumentet får kopieras endast i sin helhet.

# Couplings, fittings, check valve

For water gauge

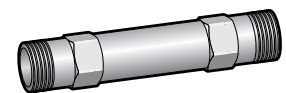
AT 7055-7059, 7076-7079,  
7590



AT 7055

## Transmission piece AT 7055

Designation	For gauge size $q_n$	D N	Thread externally*internally	Total length in mm	Approved for		
					kv	vv	AT no
Transition piece for mounting of meter with G20 connection, build length 110 mm, 2 gives connection G25 and build length 130 mm.  (mounted with gasket AT 7068-15)	0,6-1,5	2 0	G25xG20	130	x	x	7055R20-R25
Ditto but gives 190 mm build length	0,6-1,5	2 0	G25xG20	190	x	x	7055R20-R25-190
Transmission piece for mounting in $q_n$ 2,5 gauge, build length 190 mm by $q_n$ 10 meter location. 2st ger ansl. G32,  (monteras med packning AT 7068-20F)	2,5	2 0	G32xG25	260	x		7055R25-R32
Transmission piece for mounting in $q_n$ 2,5 meter, build length 190 mm by $q_n$ 10 meter location. 2 gives connection G50, 300 mm build length  (mounted with gasket AT 7068-20F)	2,5	2 0	G50xG25	300	x		7055R25-R50
Transmission piece for mounting in $q_n$ 5-6 meter, build length 260 mm by $q_n$ 10 meter location. 2 gives connection G50, 300 mm build length  (mounted with gasket AT 7068-25)	5-6	3 2	G50xG32	300	x		7055R32-R50



AT 7590

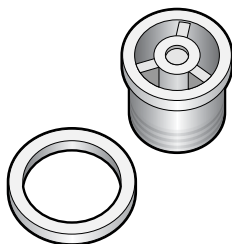
## Spud AT 7055/7590

Designation	For meter size $q_3$	DN	Thread	Total length in mm	Approved for		
					kv	vv	AT no
Spud in acetal GW plastic, to replace meter in console during build time	4	20	G25	190	x		7055-190
Ditto, made in galvanized steel	4	20	G25	190	x	x	7590P20-190
Ditto	10	25	G32	260	x	x	7590P25-260
Ditto	16	40	G50	300	x	x	7590P40-300
	$Q_p$						
Ditto, made in black steel for heating gauge	0,6-1,5	15	G20	110		x	7590P15-110
Ditto	2,5	20	G25	130		x	7590P20-130

# Couplings, fittings, check valve

For water gauge

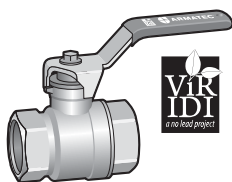
AT 7055-7059, 7076-7079,  
7590



AT 7059

## Check valve AT 7059

Benämning	For gauge		Quantity per packaging	Approved for		
	size q <sub>3</sub>	DN		kvm	vvm	AT no
Check valve for insertion in the water meter's outlet including special packing, for max 90°C SITAC approval	4	20	25	x	x	7059A20
	10	25		x	x	7059M25
	16	40		x	x	7059M40



AT 3700

## Ball valve AT 3700

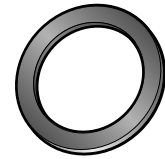
Designation	For gauge		Connection	Total length in mm	Approved for		
	size q <sub>3</sub>	D N			kvm	vvm	AT no
Ball valve in straight performance Internally threaded in both ends. With chrome plated ball with Teflon sealing. Body in "lead free" brass. Standard performance for cold/warm tap water.	4	2	G20*G20	58	x	x	3700-20
		0					
Suitable for installation of water meter console.	10	2	G25*G25	67	x	x	3700-25
		5					
Ditto, DN 25	16	4	G40*G40	94	x	x	3700-40
		0					
Ditto, DN 40							

Rätten till ändringar utan föregående meddelande förbehålls.  
Armatec ansvarar inte för eventuella tryckfel eller misstänksänd.  
Dokumentet får kopieras endast i sin helhet.

# Couplings, fittings, check valve

For water gauge

AT 7055-7059, 7076-7079,  
7590



AT 7055

## Gaskets / O-rings

Designation	Material	For gauge size q <sub>3</sub>	Dimensions		Approved for		
			D N in mm		kvm	vvm	AT no
Compression gasket for adjustable check valve sleeve AT 7058-190/220	NBR-rubber	4	2 0	30x24x4	x	x	7063-20
Ditto, for AT 7058-260	NBR-rubber	10	2 5	39x30x4	x	x	7063-25
Ditto, for AT 7058-300	NBR-rubber	16	4 0	56x47x5	x	x	7063-40
O-ring for extension piece AT 7055-20	EPDM-rubber	4	2 0		x	x	7065-20
Flat gasket for water meter coupling	Impregnated läder	4	2 0	29x23x3	x		7066-20
			2 5	38x29x3	x		7066-25
			4 0	55x43x3,5	x		7066-40
Flat gasket for water meter, thin	Plastic	4	2 0	30x23x2	x		7067A20
			2 5	38x29x2	x		7067-25
			4 0	55x43x2	x		7067-40
Flat gasket for water meter, thick	Plastic	4	2 0	30x23x4	x		7067-20-4
			2 5	38x29x4	x		7067-25-4
			4 0	55x43x4	x		7067-40-4
Special gasket for extension piece AT 7055-55/85/-115	Fiber (asbestos free)	4	2 0	30x23x3	x	x	7068-20F
Flat gasket for warm and hot water, max 130 degrees (green/white)	Fiber (asbestos free)	Q <sub>p</sub> 0,6-1,5	1 5	24x17x2	x	x	7068-15
			2 0	29x23x3	x	x	7068-20
			2 5	38x29x3	x	x	7068-25
			4 0	55x43x3	x	x	7068-40
			Q <sub>3</sub> 0	55x43x3	x	x	7068-40
Flat gasket to water meter console, thin	NBR-rubber	4	2 0	30x23x2	x	x	7069-20-2
			2 5	38x29x2	x	x	7069-25
			4 0	55x43x3	x	x	7069-40
Flat gasket to water meter console, thick	NBR-rubber	4	2 0	30x23x3	x	x	7069-20
			2 5	38x29x3	x	x	7069-25-3