

Pressure gauge

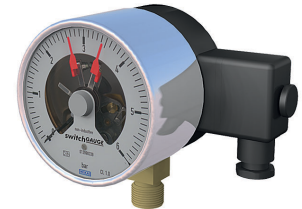
Dimension range	PN	Temperature	Material
G 3/8	At short term load 90% of the scale value	-20°C to +60°C/+80°C	Plastic/Stainless steel

Range of Application

For indication of actual pressure in heating/cooling systems. AT 8305A is supplied with a red adjustable pointer on the scale. AT 8306 is supplied with electrical contacts for high and low alarms.

UGC.31 Gauge for pressure, pipe mounted, with analogue display of instantaneous value

Pressure gauge AT 8306C is provided with electric sockets and red indicator which is adjustable through the glass. Class 1,0. Graded 0-... bar.



Quality Assurance

PED, AFS 1999:4, AT 8306C with sockets also follow the low current directive, LVD 2006/95/EG.

Material Specification

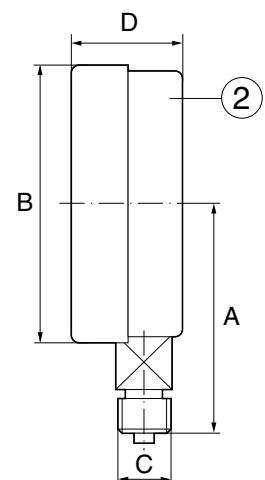
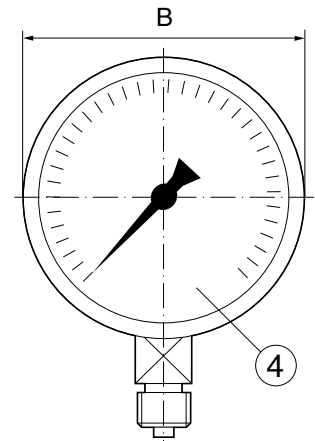
1	Bourdon tube	copper alloy
2	Housing	chromium nickelsteel with bayonet unruffled capsule
3	Gauge works	Platinum brass
4	Glass	instrument glass

Media touching parts in copper alloy. Cable for 8306C in silicone.

Dimension and Weight

	AT 8305A	AT 8306
A	85,5	83
B	100	100
C	G 3/8	G 3/8
D	30	88

Measurements in mm



Function and Design

The pressure gauge is of the bourdon tube type, which has a circular formed tubular spring with an oval cross section. The pressure in the system influences the bourdon tube internally so that an increase in pressure tends to straighten it. The free end of the bourdon tube gives a movement proportional to the internal pressure. The movement is then transferred via the measurement unit to a movement/indicated value on the scale. The pressure gauge has a red adjustable pointer to indicate the maximum allowable pressure.

AT 8306A has a built in electronic creep contact type 811, which is adjustable through the glass. The indicators can be set all over the scale range. The socket has a double function and closes under rising and falling pressure. Cable performance on the page Pg 7.

Pressure gauge

Technical information

	AT 8306C
Media temperature	-20°C to +80°C
Surrounding temperature	-20°C to +60°C
Accuracy class	1%
Temperature effect	0,4%/10°C
IP class	54
Max working pressure	Entire scale value at resting load. 90% of the scale value at alternating load.
Socket function	Creep socket 811.21
Power supply	Max 250V
Breaking effect	10W, 18VA
Electric connection	Cable performance PG7

Dimensioning

The scale range should be selected so the constant load doesn't exceed 2/3 of the scale range on 8305A and 90% of the scale value of 8306C.

Accessories and Options

Pressure gauge with electric socket in dampened or industrial performance after request.

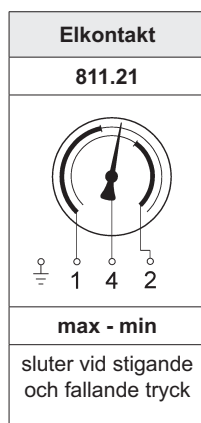
Installation

The pressure gauges should be mounted so that they are easy to read and protected against vibrations, heat, cold and high humidity. During high media temperatures a water worm pipe should be used. For pressure variations and vibrations a dampening fluid filled gauge should be used.

The cables are marked with numbers. Electric installation according to schematic.

Marking

AT8305A is marked with an Armatec logo.



Grading	AT-no. (standard performance)
0-4 bar	8306C10-4
0-6 bar	8306C10-6
0-10 bar	8306C10-10
0-16 bar	8306C10-16