

Vacuum pump

LEMA, LEMB

LEM 25/50

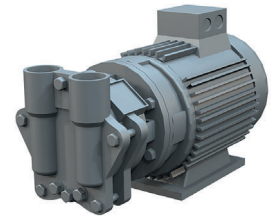
Capacity 4-60 m ³ /h	Pressure range 33-1013 mbar	Material Cast iron
---	---------------------------------------	------------------------------

Description

A one stage liquid ring vacuum pump in OEM construction.
Close coupled pump where the motor is mounted directly on the pump casing to take up as little space as possible when the pump is mounted in the system.

Range of application

Evacuation and pumping of dry gases and saturated steam.
Typical industries are chemistry, pharmaceutical, food, plastic and rubber industry.
Vacuum is used for distillation, drying, degassing, filling and boiling.



AT 6300-25

Design

The pump works according to the liquid ring principle. Fluid pumps are in some regards related with displacement pumps since the pump wheel is eccentrically located in the round pump body. When the wheel is rotating a fluid ring is created along the pump body's inner wall. In the cells (the space between the pump body's wings) inside the fluid ring rising part volumes (intake) and then decreasing volumes (outlet) will be created under one rotation.

Product key (example LEMA 26 AZ AA1 4B 7 1A)

Pos	Description	Code	Explanation
1-3	Pump model	LEM	Liquid ring vacuum pump
4	Construction	A,B	
5-7	Pump size	25-425	
8	Hydraulics	A,8 C,9	Threaded inlet/outlet Flanged inlet/outlet
9	Bearings	Z	Motor bearings
10-12	Sealing	AAE AA1	Mechanical sealing SIHI FN EBPGG Mechanical sealing SIHI FN GBVGG
13-14	Material	0A 0K 4B	See table below See table below See table below
15	Gasket	0 7	Fluid sealing O-ring Teflon
16-17	Motor data	1A,1B, KW	Depending on motor size

Only the most common combinations above, for specials Contact Armatec

Material combinations

Pos	OK
Vacuum casing	0.6025 Cast iron
Cover	0.6025 Cast iron
Guide disc	0.6025 Cast iron
Valve ball	polyamide A
Impeller	1.4308 Stainless steel

Connections

Connections	Designation
UB	Service fluid G 1/4
Ue	Drainage G 1/4
Uc	Cavitation protection M5

Service fluid in m³/h

Pressure mbar	in	33	120	200	400
LEM 25		0,26	0,26	0,26	0,2

Total service fluid by installation where the fluid is directed straight in to the drain.
For other installations ask Armatec